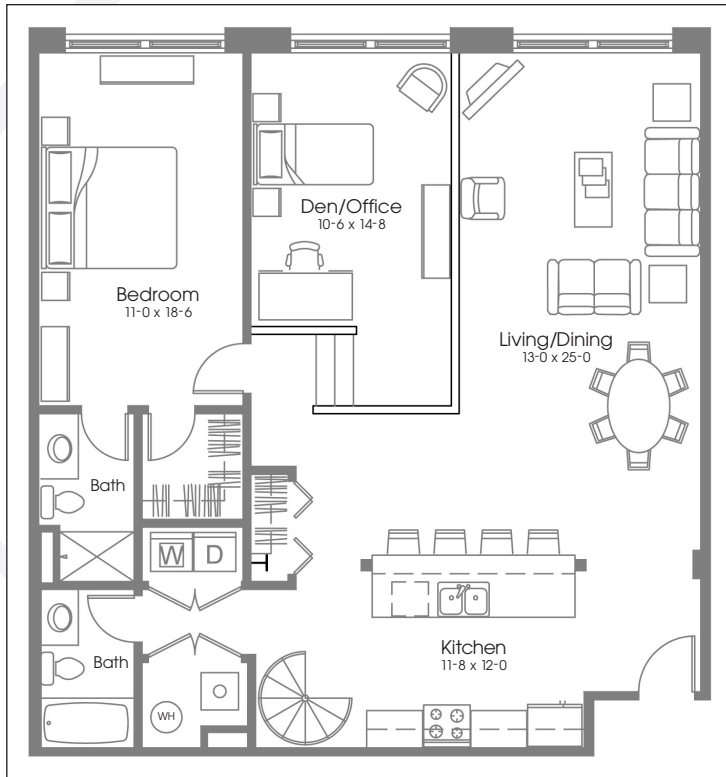


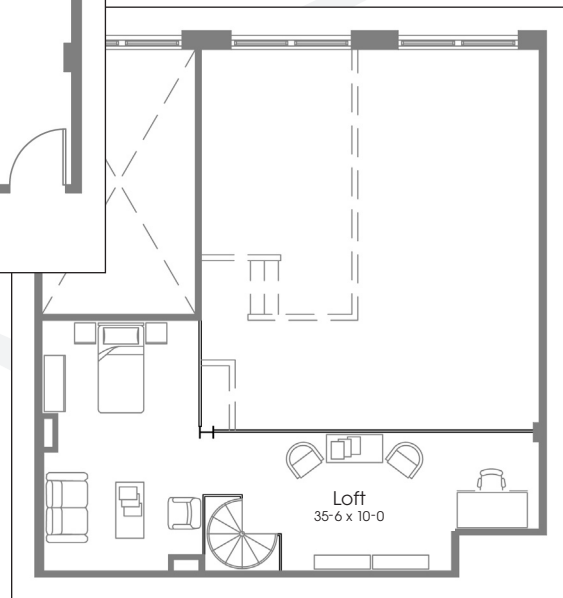
Gateway COMMONS



The Rosemont

1321 SF

- Spacious Open Floor Plan
- Beautifully Restored Hardwood Floors
- Private Master Suite
- Laundry Closet
- Appliance Island Kitchen
- Soaring 15' Ceiling Heights
- Granite Kitchen Countertops
- Raised 2nd Bedroom or Home Office
- Two Full Bathrooms
- Large Deeded Storage in Lower Level



The Rosemont Loft

425 SF

The Rosemont takes *The Bancroft* units to a higher level, literally. Located solely on the third level at *Gateway Commons*, *Rosemont* units offer a circular staircase to a generous lofted space overlooking all three banks of windows for a stunning view to behold. Nine *Rosemont* units are available with either northern or southern, city-view exposures.

All floor plans, site plans, renderings, depictions and/or descriptions are for illustration purpose only and are subject to change without notice. All units are subject to prior sale. Please consult recorded plans and condominium documents for details prior to purchase.

Where timeless space meets modern day living