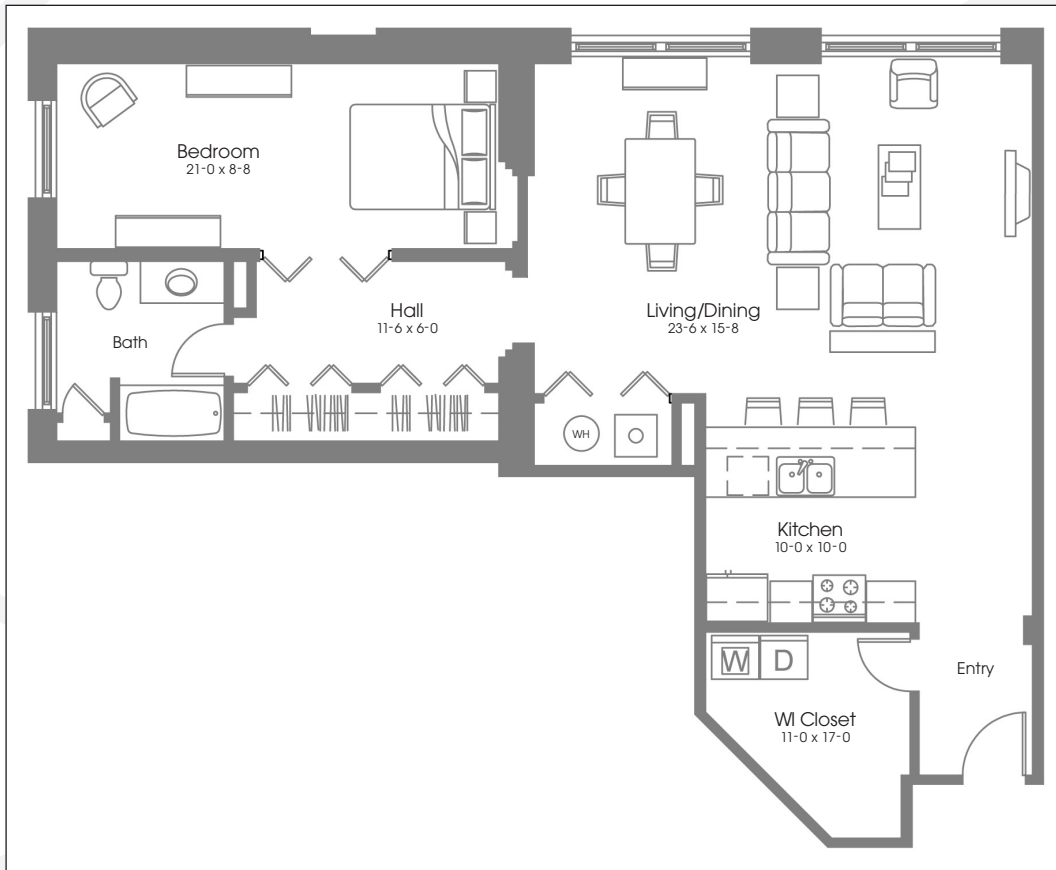


# Gateway COMMONS



## *The Philmont*

1108 - 1128 SF

- Dynamic Corner Unit
- Beautifully Restored Hardwood Floors
- Exposed Brick Walls
- Applianced Peninsula Kitchen
- Soaring 15' Ceiling Heights
- Granite Kitchen Countertops
- Large Laundry Room
- Deeded Storage in Lower Level

*The Philmont* is rare at *Gateway Commons* and exists only once on each level at the northwest corner. Offering lots of exposed brick walls, this spacious one bedroom unit creates an atmosphere worthy of an art gallery. An abundance of windows shed a wealth of natural light and its close proximity to the elevator make it quite convenient to come home to.

All floor plans, site plans, renderings, depictions and/or descriptions are for illustration purpose only and are subject to change without notice. All units are subject to prior sale. Please consult recorded plans and condominium documents for details prior to purchase.

*Where timeless space meets modern day living*