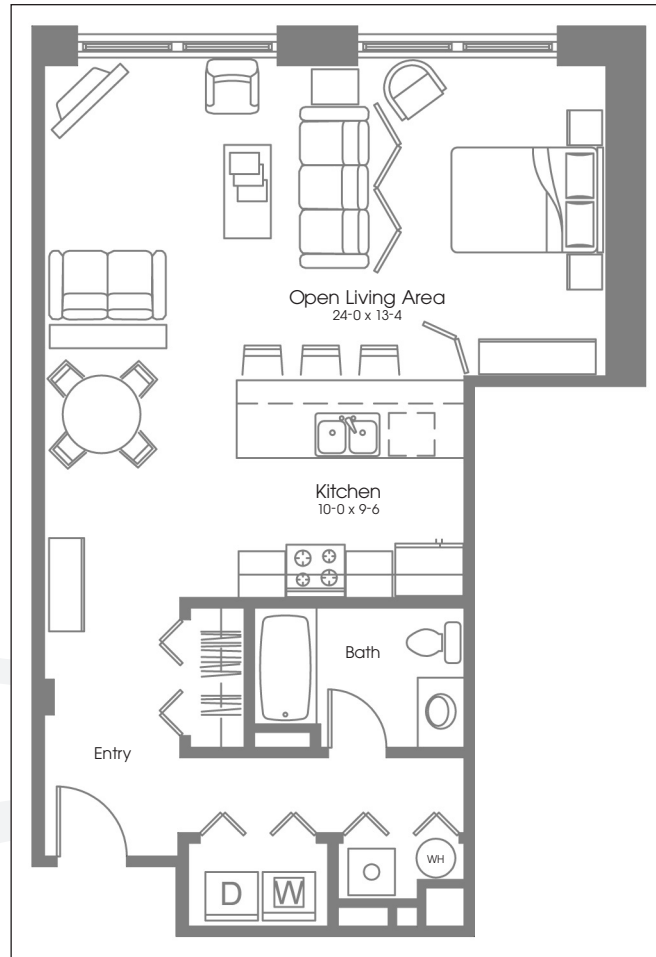


Gateway COMMONS



The Grant 734 - 748 SF

- Studio-Style Floor Plan
- Beautifully Restored Hardwood Floors
- Applianced Peninsula Kitchen
- Central Air Conditioning
- Soaring 15' Ceiling Heights
- Granite Kitchen Countertops
- Exposed Brick Walls
- Deeded Storage in Lower Level

The Grant is an affordably priced, efficient studio-size unit perfect for a single person looking for a simplified lifestyle. Located on the northeast corner of the building overlooking the Peters River, these units are near the stairwell accessing the parking areas and easily furnished to accommodate bedroom, living and dining room sets.

All floor plans, site plans, renderings, depictions and/or descriptions are for illustration purpose only and are subject to change without notice. All units are subject to prior sale. Please consult recorded plans and condominium documents for details prior to purchase.

Where timeless space meets modern day living